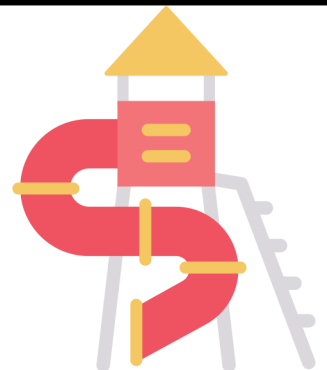
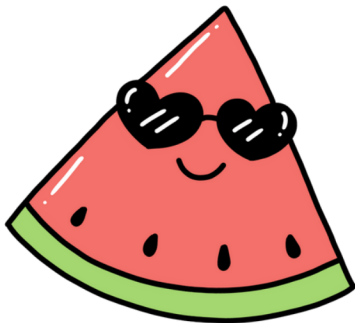
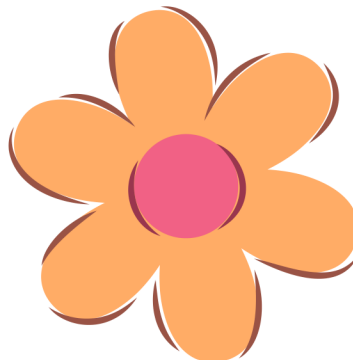
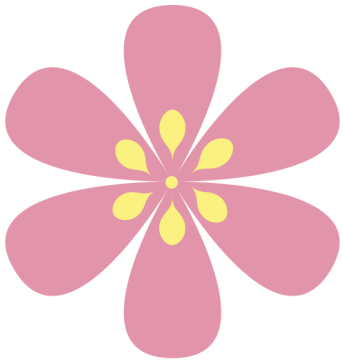
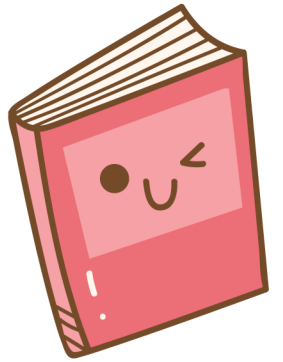
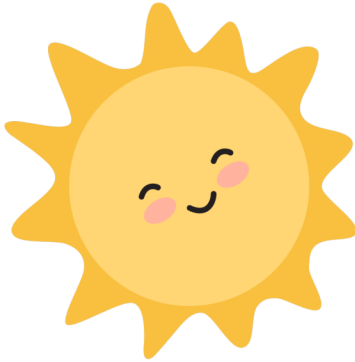
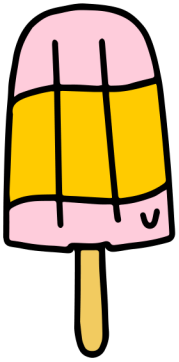
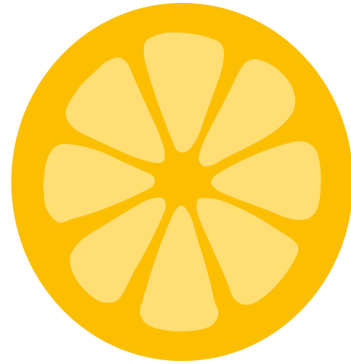
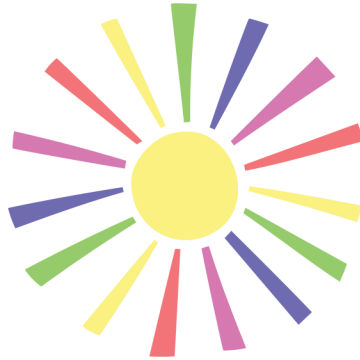
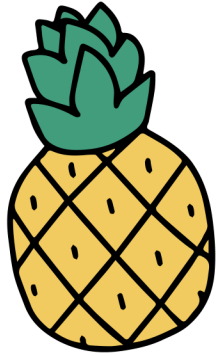
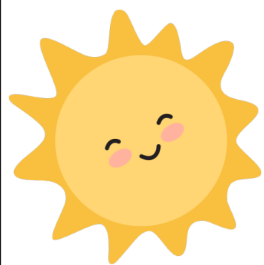
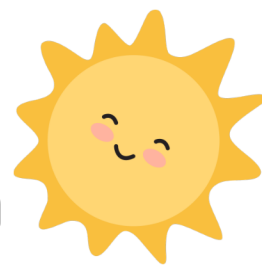


# Sunny Summer Search





# Village of Waunakee Sunny Summer Search



Get Out and Explore Our Village!

June 1 – 30

One Summer picture is hidden outdoors at each of the following locations:

- Waunakee Public Library – 201 North Madison Street
- **Waunakee Village Center – 333 South Madison Street**
- Schumacher Farm Park -- 5682 Hwy 19
- **Waunakee Food Pantry – 710 South Street**
- Gravel Path between Hwy 113 and Prairie Park (1000 N. Madison Street)
- **Village Park – 410 E. Main Street**
- Hanover Park -- 1204 Hanover Trail
- **Castle Creek Conservancy – 900 South Division Street**
- Centennial Park – 901 South Holiday Drive
- **Laubmeier Park – 1155 Prairie View Drive**
- American Legion Post 360 – 417 East Main Street
- **Six Mile Bike Path – West of Madison Street, across from Waunakee Public Library**
- Bolz Conservancy – 1411 Tierney Drive
- **Meadowbrook Park – 900 Kopp Road**
- Ripp Park – 213 Dorn Drive
- **South Side of Main Street (downtown)**

Name: \_\_\_\_\_

Phone: \_\_\_\_\_

Visit each location (outside only) and find the sign with the Summer picture. Write down the location under the matching picture on your Bingo sheet. Find 4 pictures across, down, or diagonal to win a Bingo prize. Bring your winning Bingo card to the Village Center to claim your prize. Fill in all 16 pictures and turn it in at the Village Center by **noon on July 3** to be entered in our Grand Prize Drawing.

## Questions?

Contact Connie Gavinski at the Village Center

[cgavinski@waunakee.com](mailto:cgavinski@waunakee.com) | 608-850-5992

Or Brittany Gitzlaff at Waunakee Public Library

[bgitzlaffewaupl.org](http://bgitzlaffewaupl.org)

