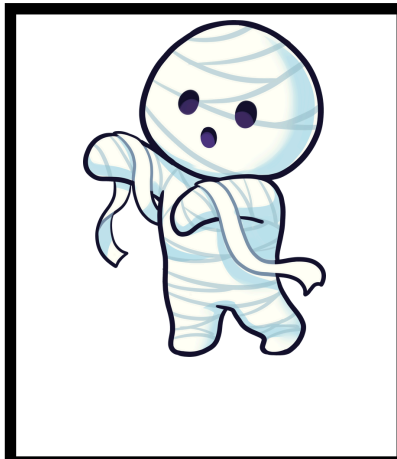
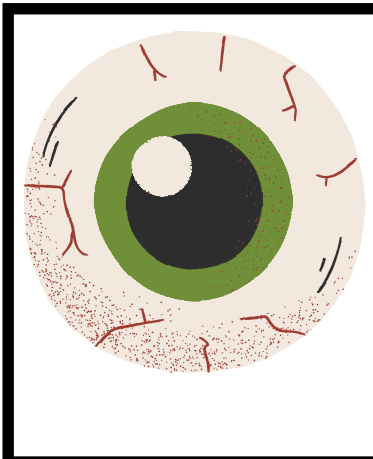
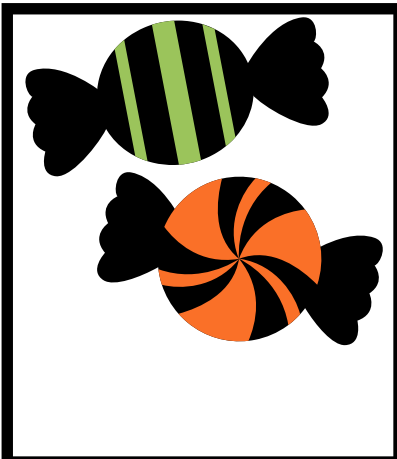
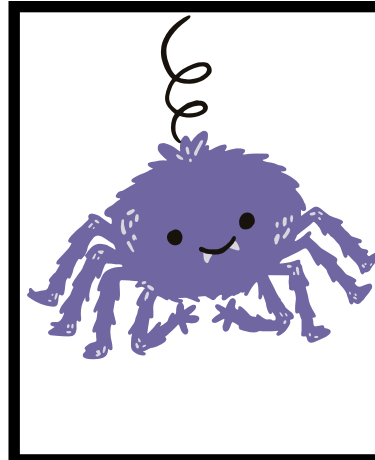
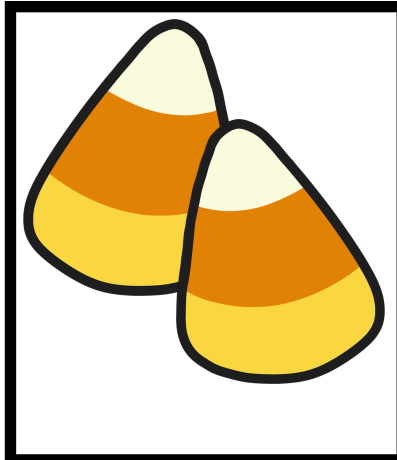
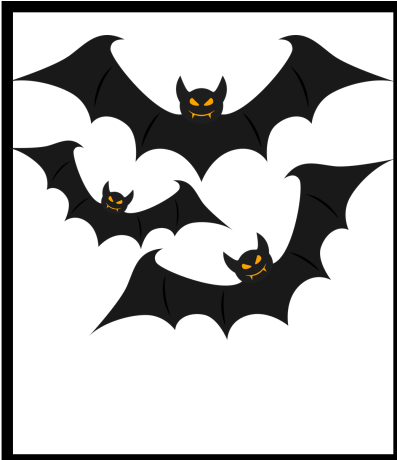
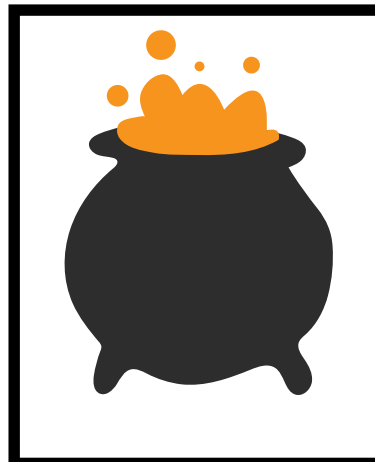
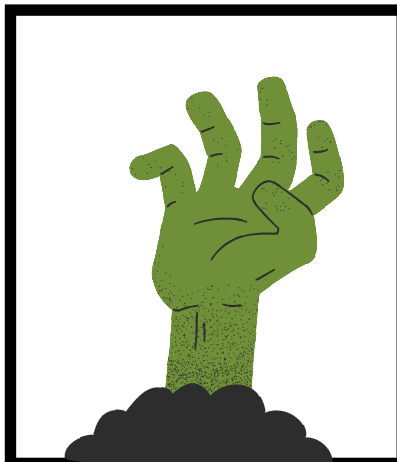
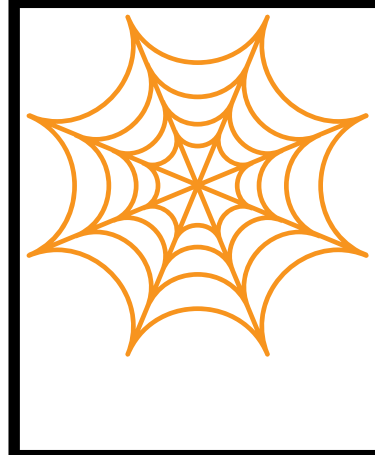
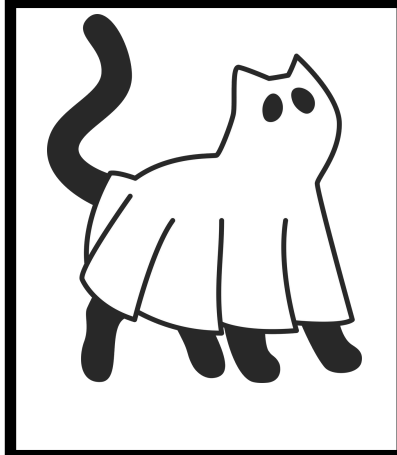
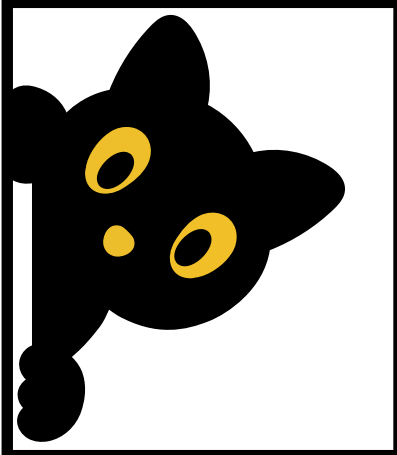


Halloween Hide





Village of Waunakee Halloween Hide



Get Out and Explore Our Village!
October 1 – 31

One Halloween picture is hidden outdoors at each of the following locations:

- [Waunakee Public Library – 201 North Madison Street](#)
- Waunakee Village Center – 333 South Madison Street
- [Village Park – 410 East Main Street](#)
- Castle Creek Conservancy – 900 South Division Street
- [Bolz Conservancy – 1411 Tierney Drive](#)
- Waunakee Fire Department – 401 West Second Street
- [Montondon Park – 1211 Lawton Lane](#)
- Heritage Hills Park – Hillcrest Drive
- [Peaceful Valley Park – 2111 Peaceful Valley Parkway](#)
- Centennial Park – 901 South Holiday Drive
- [Laubmeier Park – 1155 South Prairie View Drive](#)
- Westbridge Park – 1040 Kopp Road
- [Scenic Valley Park – 400 Badger Lane](#)
- Ripp Park – 213 Dorn Drive
- [North Side of Main Street](#)
- [South Side of Main Street](#)

Name: _____

Age: _____

Phone: _____

Visit each location (outside only) and find the sign with the Halloween picture. Write down the location under the matching picture on your Bingo sheet. Find 4 pictures across, down, or diagonal to win a Bingo prize. Bring your winning Bingo card to the Village Center to claim your prize. Fill in all 16 pictures and turn it in at the Village Center by **Noon on Monday, November 3** to be entered in our Grand Prize Drawing.

Questions?

Contact Connie Gavinski at the Village Center

cgavinski@waunakee.com | 608-850-5992

or Brittany Gitzlaff at Waunakee Public Library

bgitzlaffewaupl.org

