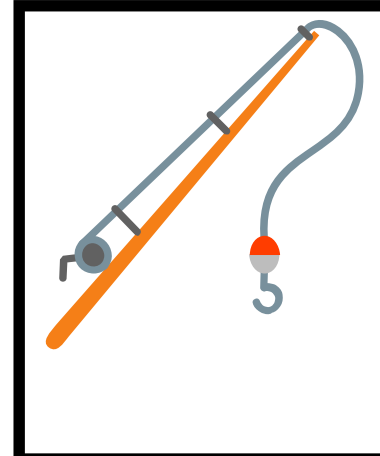
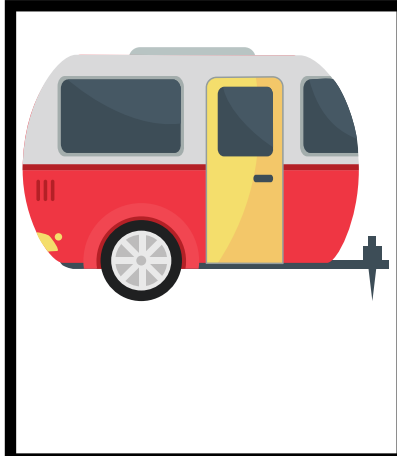
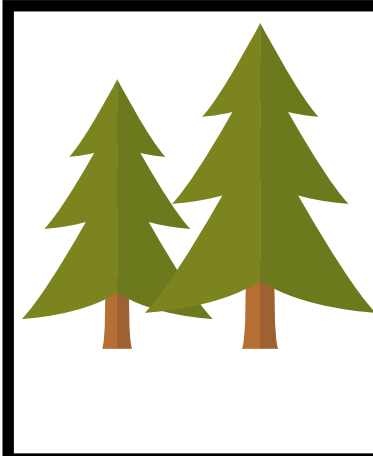
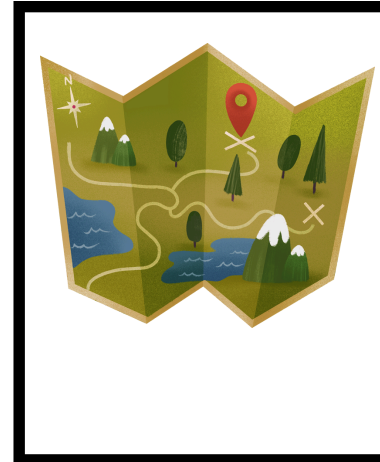
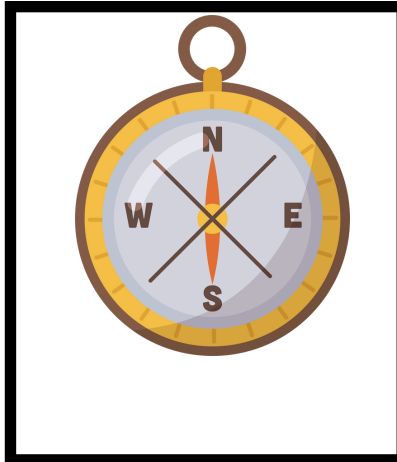
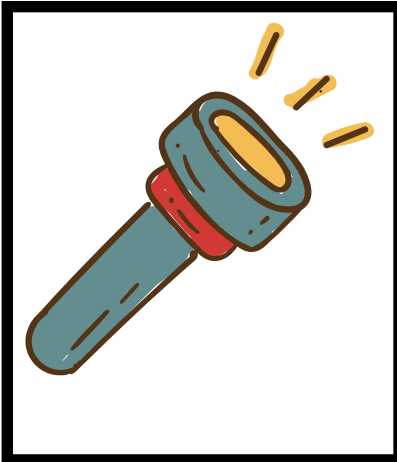
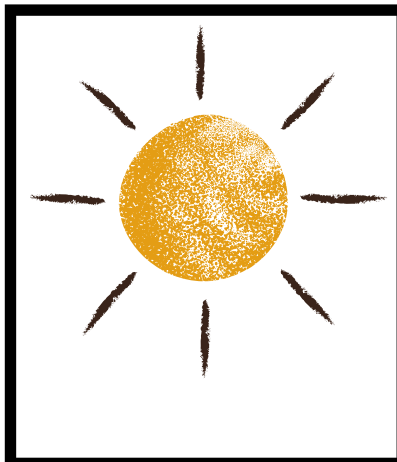
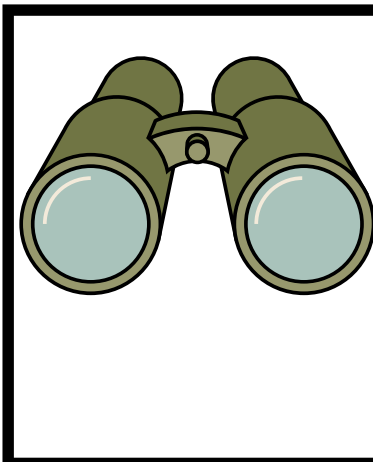
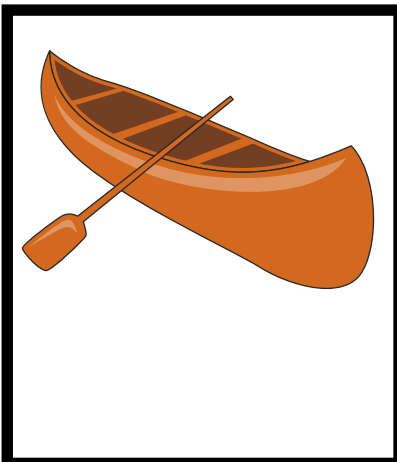
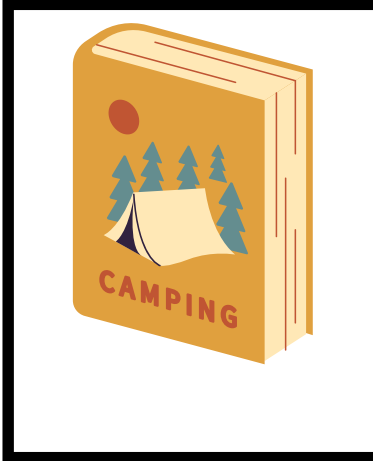
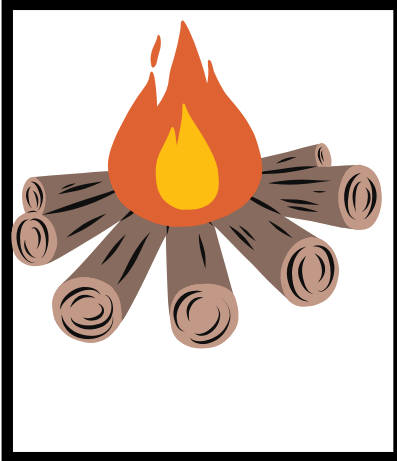
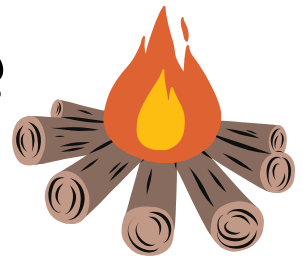


# Camping Challenge





# Village of Waunakee Camping Challenge



Get Out and Explore Our Village!  
August 1 – 31

One Camping picture is hidden outdoors at each of the following locations:

- Waunakee Public Library – 201 North Madison Street
- Waunakee Village Center – 333 South Madison Street
- Village Park – 500 East Main Street
- Castle Creek Conservancy – 900 South Division Street
- Centennial Park – 901 South Holiday Drive
- Ripp Park – 213 Dorn Drive
- Reeve Park / Chamber of Commerce – 100 East Main Street
- Bolz Conservancy – 1411 Tierney Drive
- Meadowbrook Park – 900 Kopp Road
- Village Center Pond – 300 South Madison Street
- Schumacher Farm Park – 5682 Hwy 19
- Tierney Park – 1413 Tierney Drive
- Savannah Park – 1202 Bluebird Trail
- Settlers Park – 1709 Blueridge Trail
- Kippley Park – 906 Welcome Boulevard
- North Ridge Park – 313 North Ridge Drive

Name: \_\_\_\_\_

Age: \_\_\_\_\_

Phone: \_\_\_\_\_

Visit each location (outside only) and find the sign with the Camping picture. Write down the location under the matching picture on your Bingo sheet. Find 4 pictures across, down, or diagonal to win a Bingo prize. Bring your winning Bingo card to the Village Center to claim your prize. Fill in all 16 pictures and turn it in at the Village Center by **Noon on Tuesday, September 2** to be entered in our Grand Prize Drawing.

## Questions?

Contact Connie Gavinski at the Village Center

[cgavinski@waunakee.com](mailto:cgavinski@waunakee.com) | 608-850-5992

or Brittany Gitzlaff at Waunakee Public Library

[bgitzlaffewaupl.org](http://bgitzlaffewaupl.org)

